

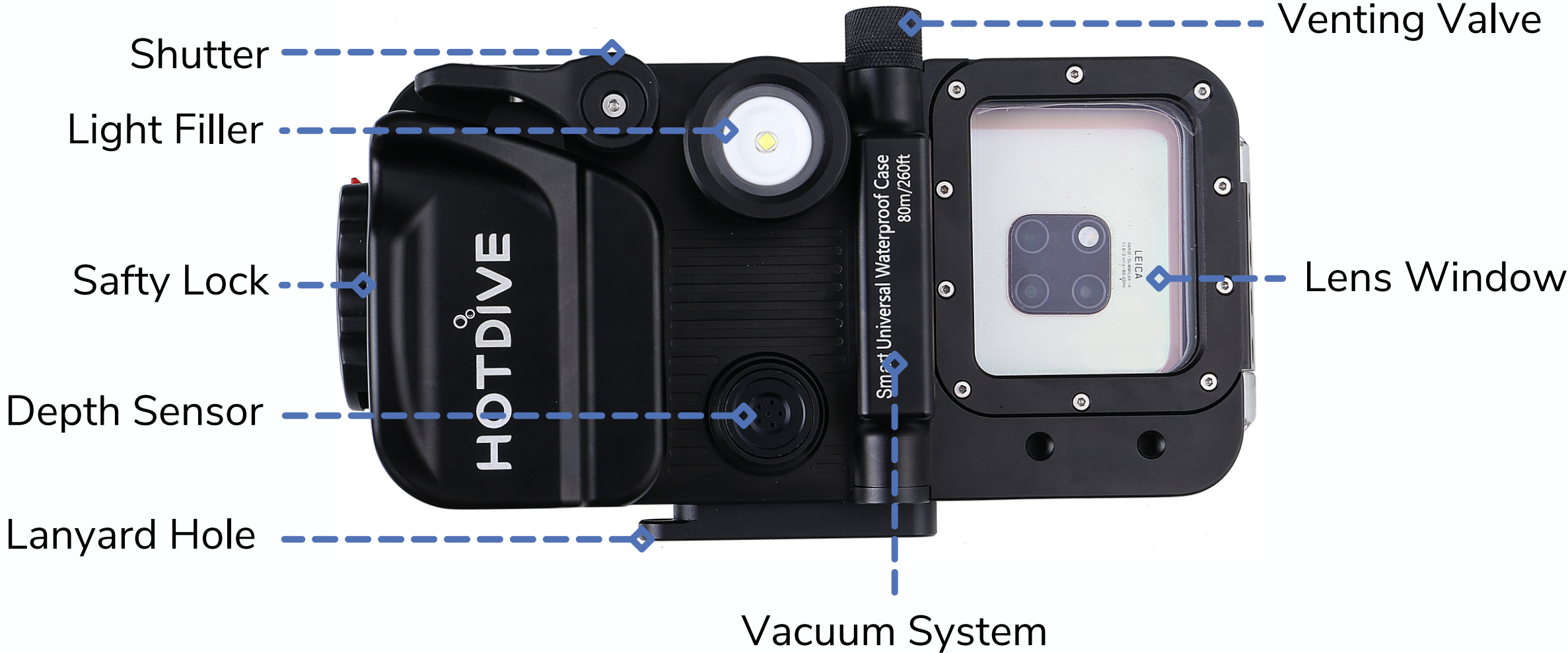
HOTDIVE

SMART PHONE HOUSING

MAKING DIVE EASY



SPECIFICATIONS



Depth: 65 mm/2.6 inch 210 mm/8.3 inch



SPECIFICATIONS & DIMENSIONS

- Material: 80% Aluminum+20% plastic
- Depth Rated: 80m/260feet
- Internal: 168x86x10 mm/6.6x3.3x0.4 inch
- External: 210x110x65 mm/8.27x4.33x2.56 inch
- Vacuum System: Automatic
- Depth Sensor: Yes(optional for pro)
- Temp sensor: Yes(optional for pro)



Universal Smart Phone Housing

FIT FOR ALL IPHONE SERIES
AND MOST OF ANDROID
PHONES

The phone size within 168*84*10 mm(6.6*3.3*0.4 inch), and
the camera viewfinder window is 50*60 mm(2.0*2.4 inch)



Hotdive is equipped with a Nordic Semiconductor ultra-low power (ULP) wireless chip. The millisecond-level processing speed makes our in-depth monitoring more sensitive, and low power consumption has a stronger signal to ensure a smooth connection with the mobile phone.

In addition, it is equipped with a Swiss TE MS5083 depth sensor, which accurately monitors our depth data and temperature data in real time, and HOTDIVE can also calculate the ascent speed and issue safety warnings. HOTDIVE also has the function of an underwater compass, allowing us to know our diving direction at any time, making diving safer.

SMART HOUSING

Built-In Dive Computer



Compass



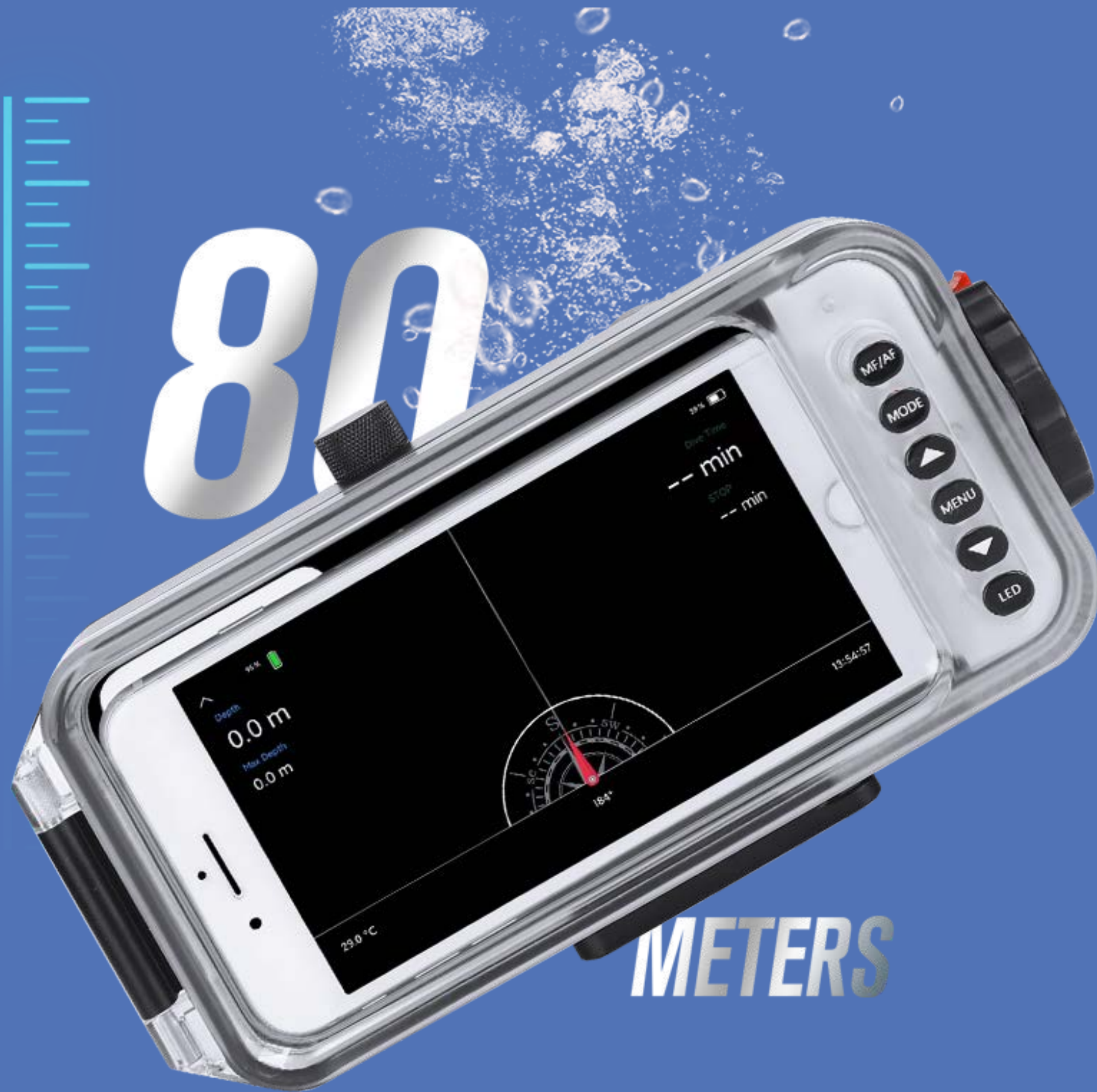
Depth Sensor



Dive Time



Ascending Rate



80 M/260 Feet Waterproof

Precision machining allows the device to easily achieve a waterproof effect of 80 meters/260 feet. The whole machine of HOTDIVE adopts precision CNC processing and production, and the product accuracy reaches ± 0.02 mm (787 microinches). Each device undergoes strict underwater pressure testing before leaving the factory to ensure that each device is strictly waterproof.

H1



SMART AUTOMATIC AIR PUMP SYSTEM

The Hotdive housing has a built-in auto vacuum pump. The unique automatic vacuum system eliminates the traditional manual pump, makes it user-friendly, and achieving a real anti-fog effect, allowing us to obtain high-quality photos and videos.



UPGRADED

H2



HotDive H2 model upgrade auto pump motor which have 300ml/min(0.08 gallon/min) capability allowing HotDive to complete the air seal within 40s and the internal air pressure stabilize at 0.42 bar/ata*(6.09 psi).

BUILT-IN 3500MA LITHIUM BATTERY

The fill light can continuously illuminate for 100 minutes. If only used for photography and other functions, the battery of HOTDIVE can last for 20 days.





SOFTWARE CONFIGURATION

HotDive develops easy but powerful photograph software by utilize the most of the phone's powerful camera. Not only you have access to RAW photo(iOS), ISO, shutter speed, exposure value and color temperature you also shoot up to 4K video and photos. Even better, you can preview your shoot with phone size big screen and make your photos&videos perfect and not out of focus.

QUICK TO DOWNLOAD HOTDIVE APP FOR FREE

Available in the App Store and Google Play



Download
From Google Play



Download
From App Store



Scuba Diving Mode & Freediving Mode

◦ Scuba Diving Mode ◦

(Set in HotDive APP)



Maximum
Depth Reminder



Diving Time
Reminder



Ascent Speed
Warning



◦ Freediving Mode ◦

(Set in HotDive APP)



5 Different
Depth Reminders



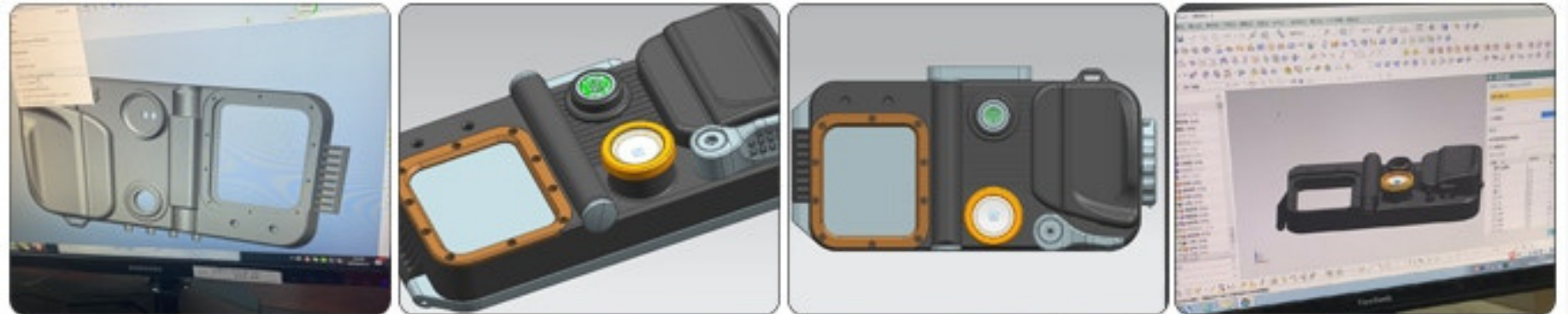
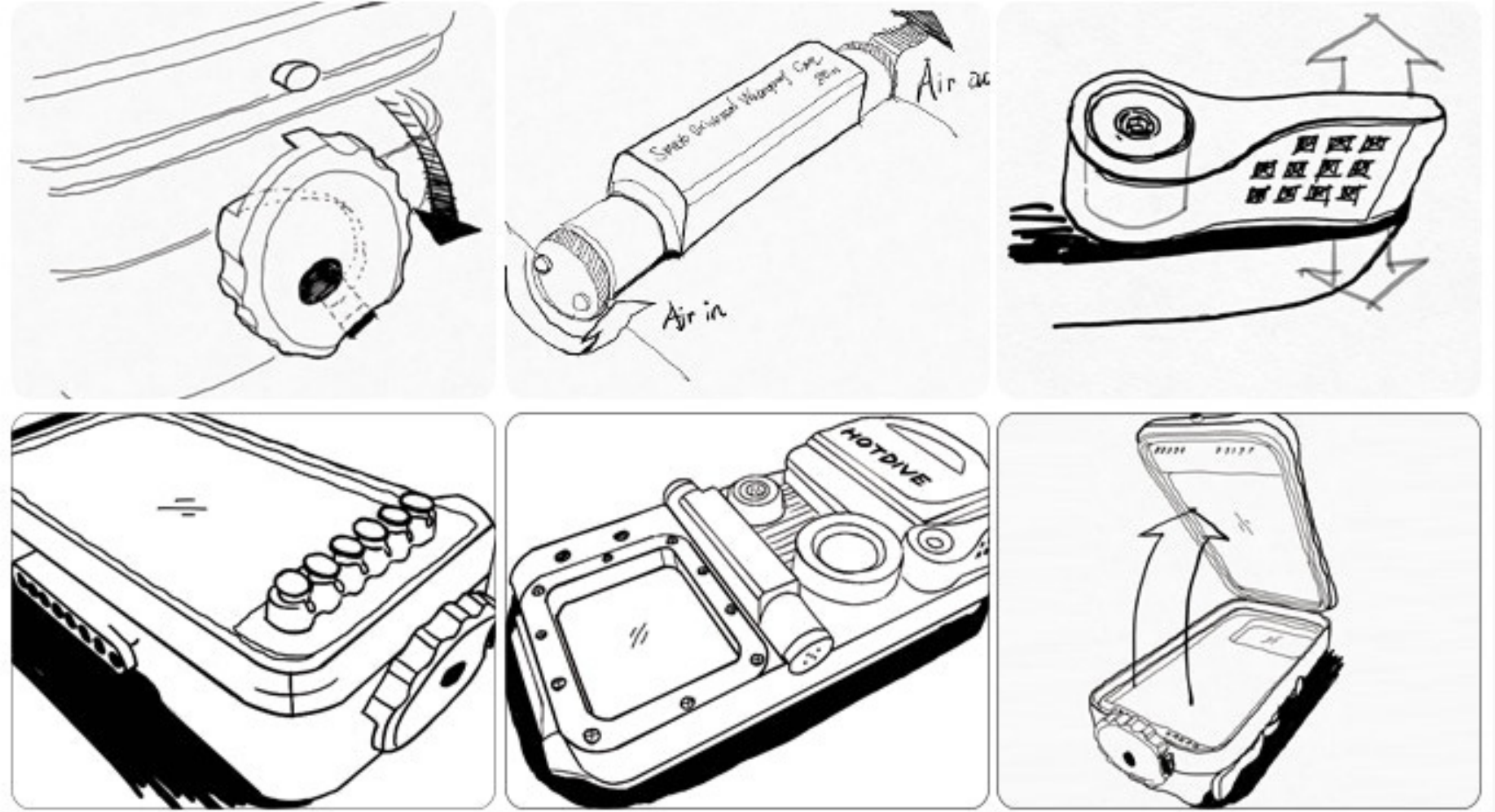
Reminder For
Surface Break



Make It Your Own with Lenses



HotDive Production Process





OUR WORKSHOP

We are specialize in manufacture diving equipment. Our current product line including HotDive smartphone housing, HotDive mini scuba, HotDive regulator, PUFFER spare air, PUFFER drowning proof bracelet, HotDive regulator hose etc. We have our own product hardware, software R&D team. Now we have more than 20 precision machining and milling cutter devices. Also our company own precision tools include automatic optic inspection device, height measuring instrument, outer diameter measuring instrument, microscope, tensioner inspection device, air tightness measuring instrument, pressure measuring instrument and a number of 43 workers, with more than 8 years of product processing and manufacturing experience, we can undertake OEM orders for most processing and manufacturing.



WHAT PEOPLE SAY



I am very happy with the case. Switching lenses in the app would be a great feature. and the dimming of the display while the recording is running should be prevented. Saturday I'm going to head for the Caribbean. 16:08



Bob Joziassse
about 2 months ago

I just came back from holidays and dove with the hot dive for the first time. It's great! It really works well! It is so cool to get nice pictures even at 20 m depth with the LED light. And the photos all right away on your phone ready to be shared. This product is really amazing! And the logbook is filled right away with the correct data. Perfect!



Mickaël Bettan

8月14日

Back from Astree wreck! Bad visibility at 40m so only pictures at ceiling with Hotdive Pro.

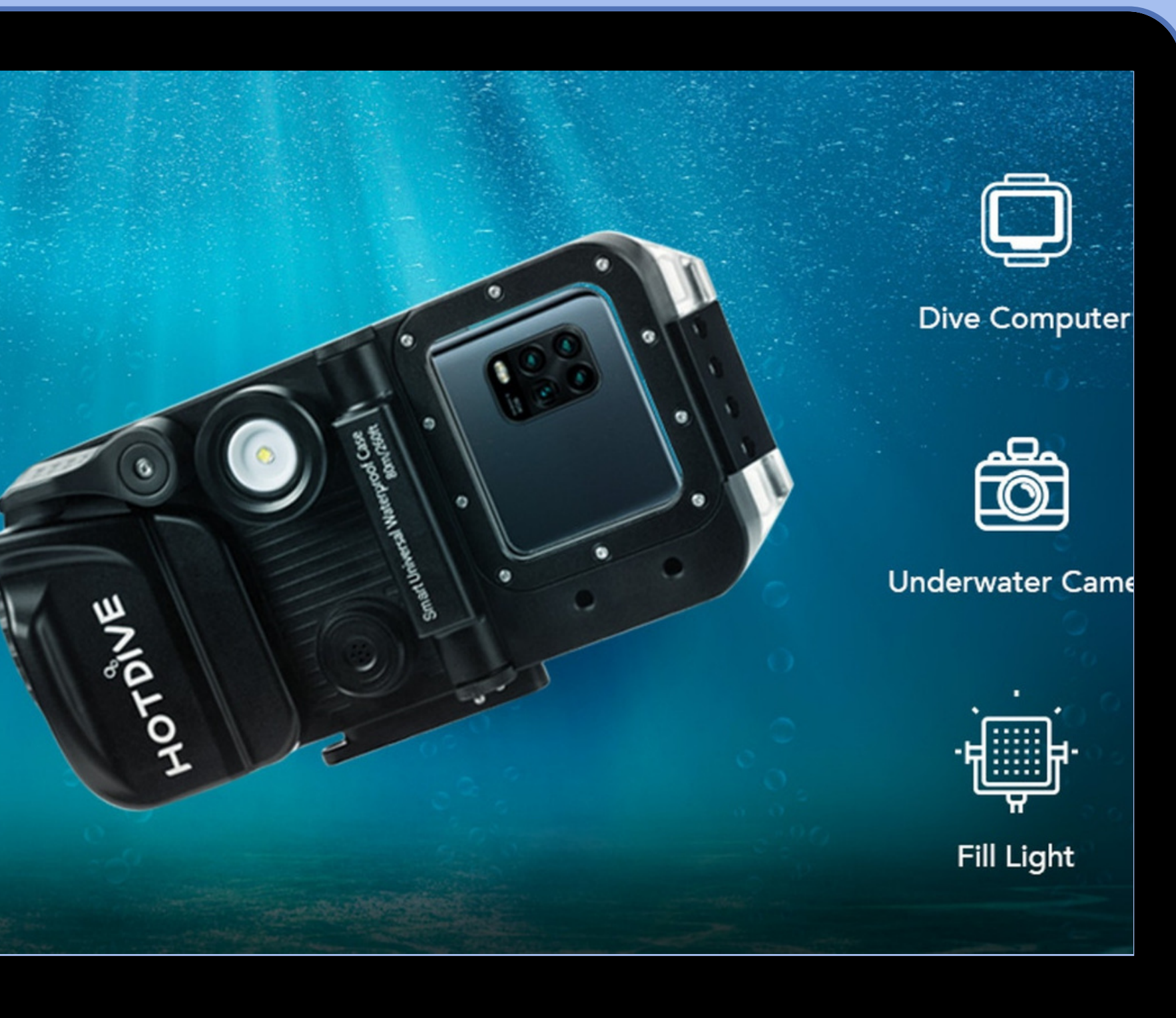


Kim Webb

10月11日 14:14

Visibility was terrible and yet the HotDive was able to capture some great pictures. So happy 🥰 These were taken yesterday at Tokai Maru in Guam 😊 iPhone 8plus was used.





KICKSTARTER



CROWDFUNDING

\$194418.95 by 765 backers
\$166798.24 by 677 backers on Jan 1, 2021

MEET OUR TEAM



Eason Xiong
Founder of HotDive
Advanced Open Water
Diver



Alex Dong
Exterior Designer
Founder of VANE
Architect



Ruonan(Mark) Sun
Senior Marketing Specialist
PADI OWSI&Freedive
Instructor
Molchanovs W2 Instructor

OUR CERTIFICATES



The company has a series of certifications like FCC, CE, MSDS, and international invention and design patents.

HOTDIVE

CONTACT US

Narwhal Technology (Dongguan) Co., Ltd
Room 301, No.62 Zhen'an East Road, Chang'an, Dongguan, China
Tel: +86 18029081686-Wechat/WhatsApp
E-mail: team@hotdive.cn
Tel: 0086 18029081686
Http:// www.hotdive.cn

